



por HJR Reefscaping

EcoEléctrica

BMPP

Drones & manatees

Guardianes de Maria Langa

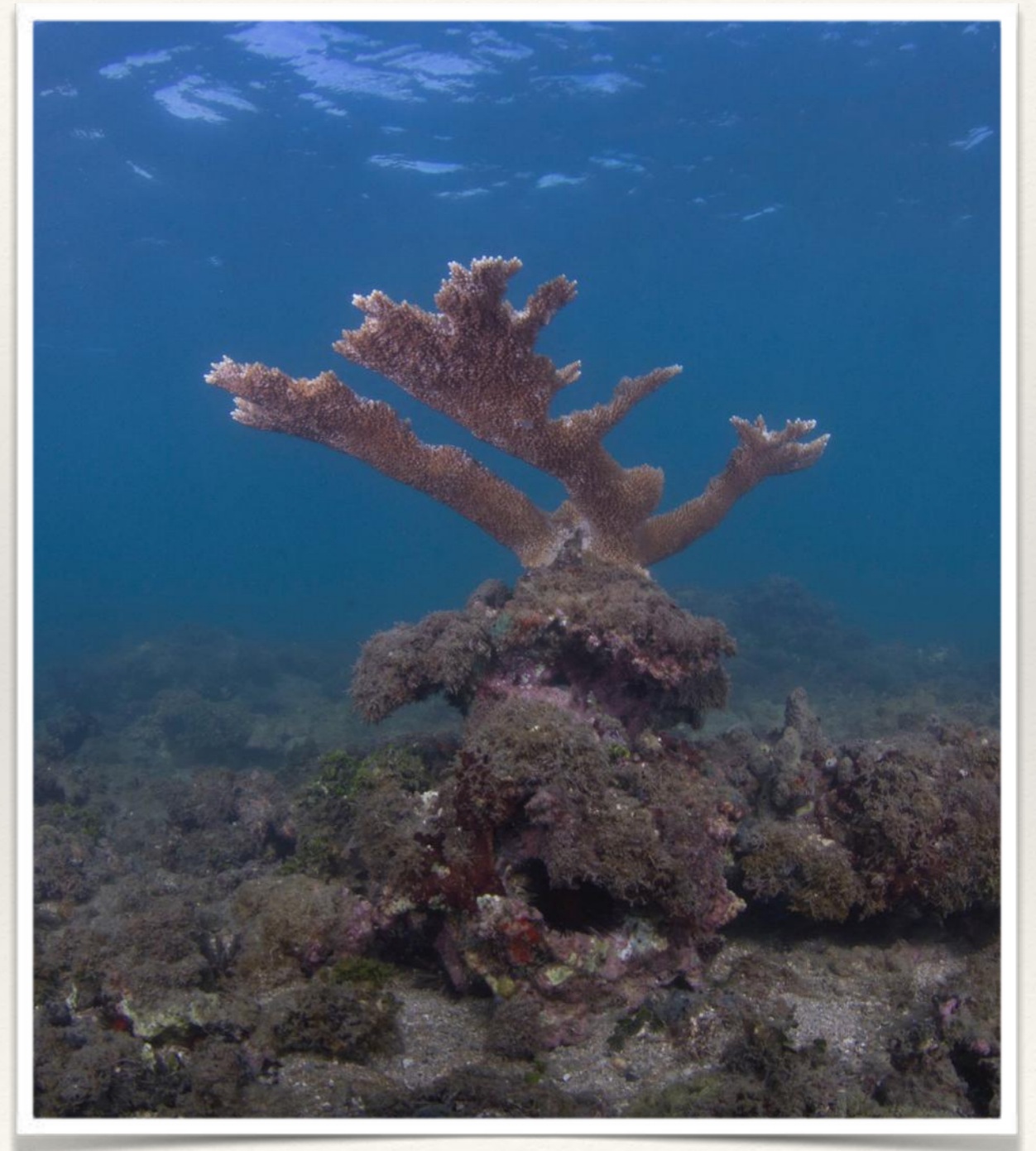


Intake Station

Discharge Station

BMPP-Corals & Fish

- ❖ Our team consist of professors, graduate students, undergraduate students and many volunteers.
- ❖ Since 2011 identify trends in the abundance of the different benthic categories
- ❖ Describe the demography of ESA coral species within the action area
- ❖ Record abundances of key marine macroinvertebrates
- ❖ ESA fish nassau grouper (*Epinephelus striatus*)



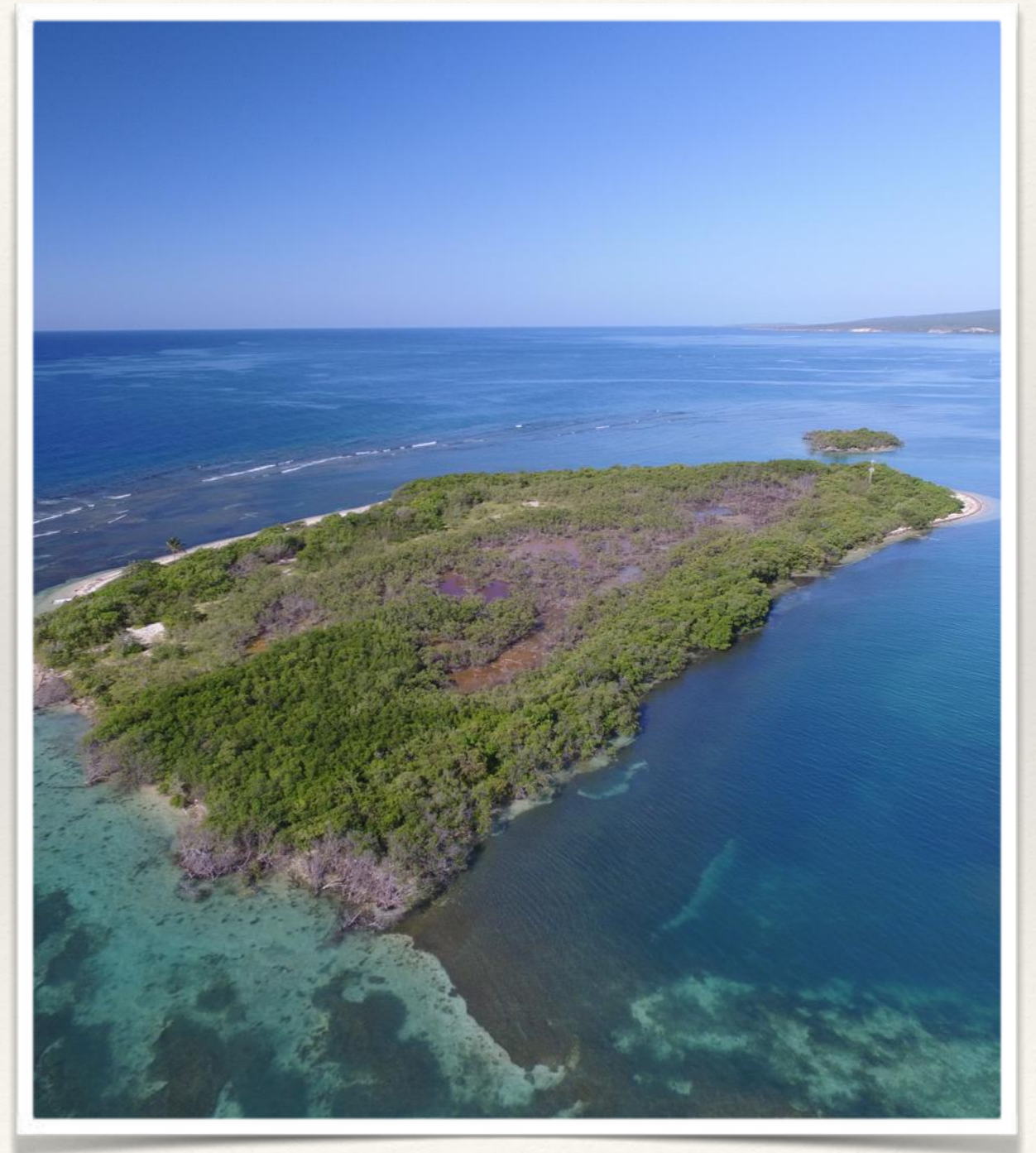
Drones & Manatees

- ❖ Collaboration with **NFWS**
- ❖ Number of missions: **120**
- ❖ Total area surveyed: **16.5 km²**
- ❖ Photos analyzed: **18,688**
- ❖ Manatees counted in all missions: **55**
- ❖ Nurse shark aggregation



Guardianes de Maria Langa

- ❖ No rat activity at Maria Langa
- ❖ Habitat Vulnerability (USFWS)
- ❖ *Acropora palmata* outplanting 100% survivorship (4.2 cm) (NOAA)
- ❖ Increase of user awareness in ML conservation (Guayanilla fishing community)
- ❖ Bird census continues in Cayo Caribe
- ❖ Manatee buoys (DRNA)
- ❖ Rats control will start 2017!



Outreach and education

- ❖ 2do Simposio de Bosques Secos de Puerto Rico (January)
- ❖ Festival Come Pez León (July)
- ❖ Consulting at British Virgin Islands government, private sector and NGO (September)
- ❖ Video “5 millas por hora” (3,800)(September)
- ❖ Simposio de la Reserva nacional de Investigación Estuarina de Bahía de Jobos
- ❖ Presentation to representatives of 8 countries in Dominican Republic (November)
- ❖ Presentation at Coral Restoration Workshop (November) (NOAA)

